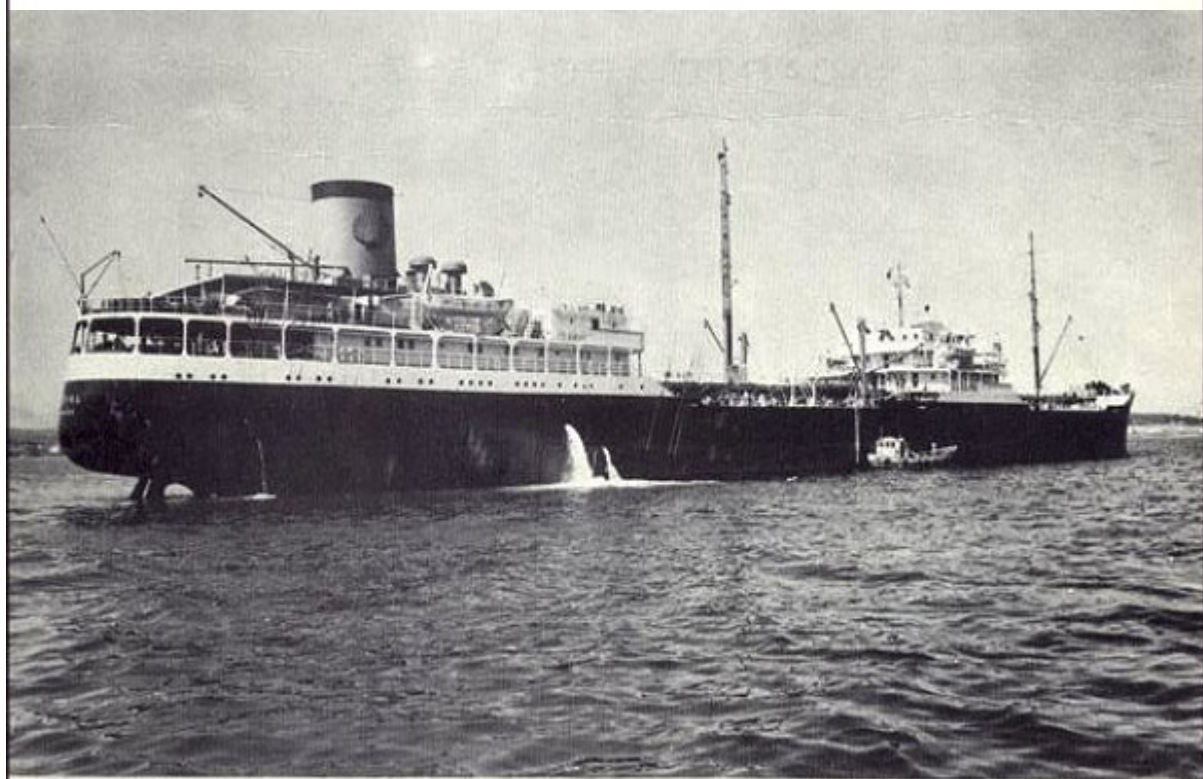
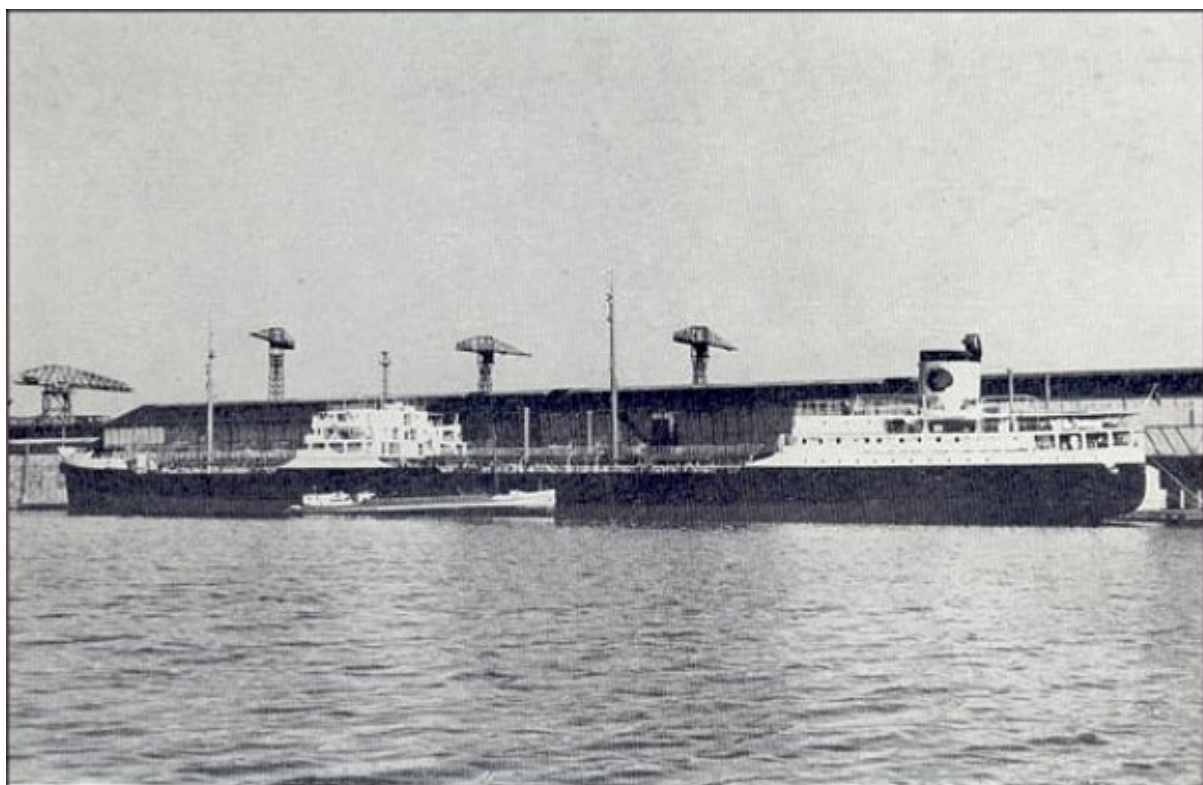


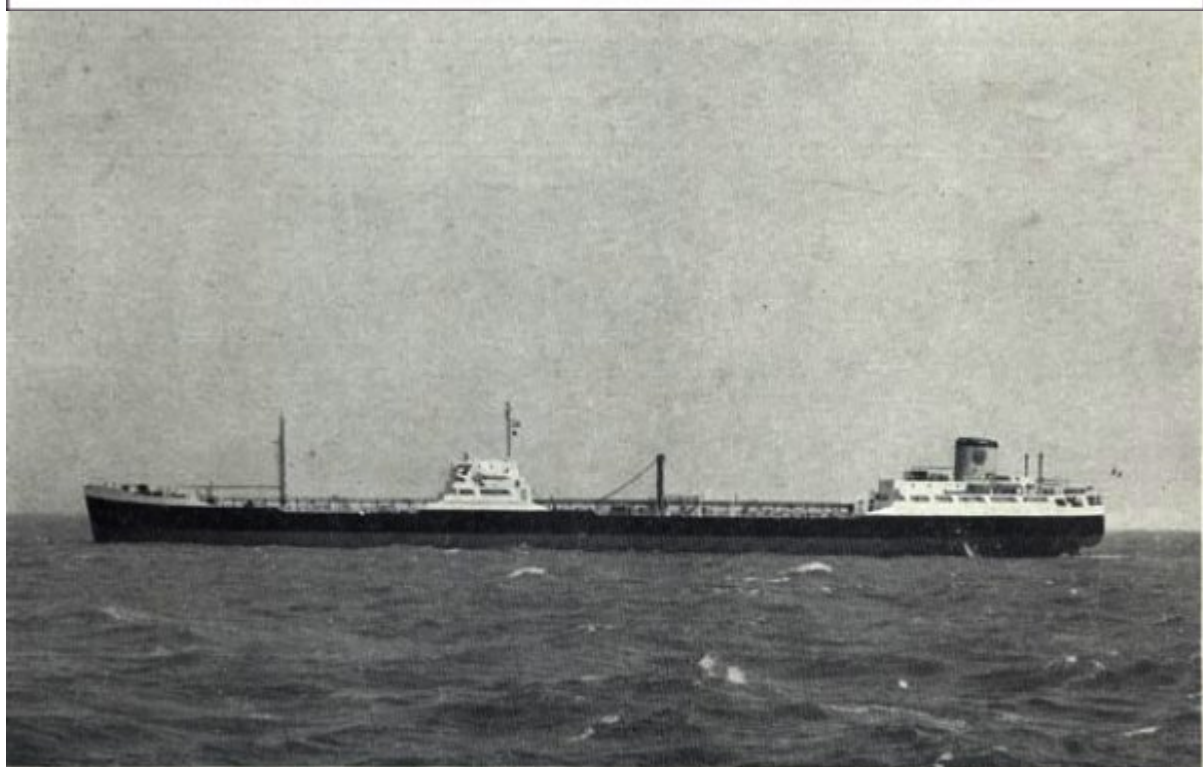
**SOCIETE MARITIME SHELL — S.T.S. IPHIGENIA 17.933 D.W. TONS**



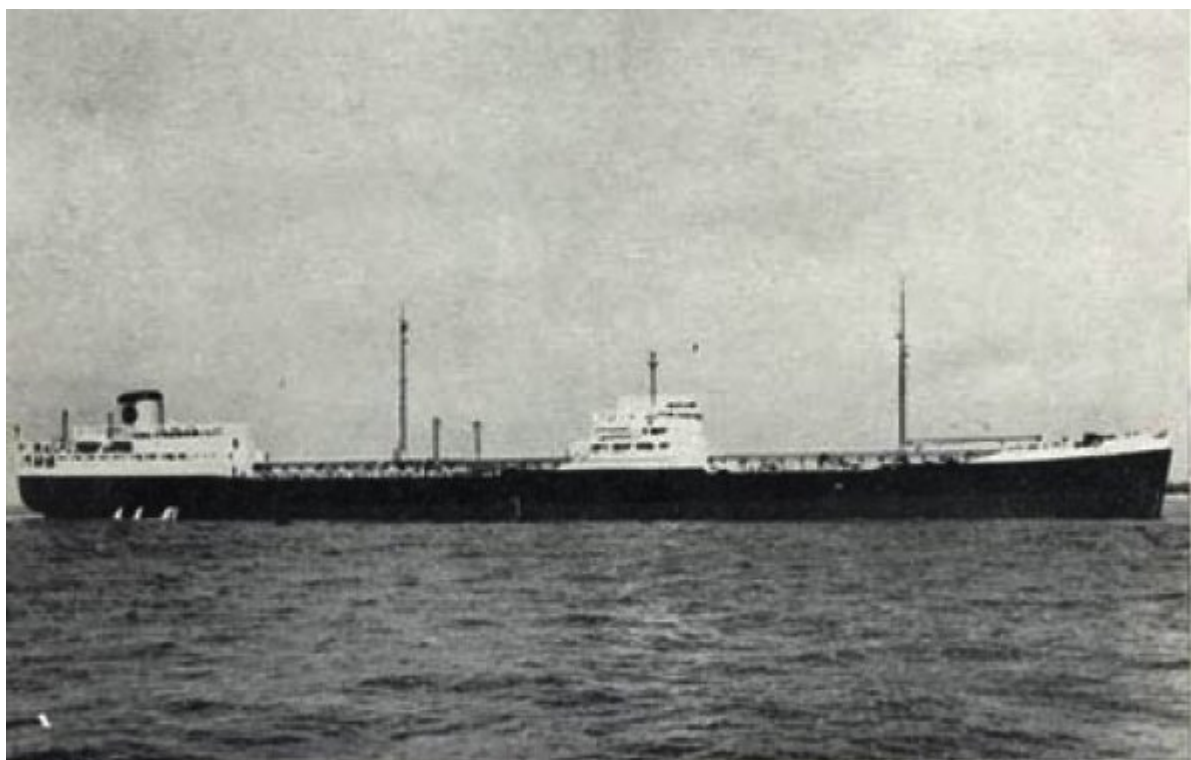
**SOCIETE MARITIME SHELL — S.T.S. IRIDINA 17 958 D.W. TONS**



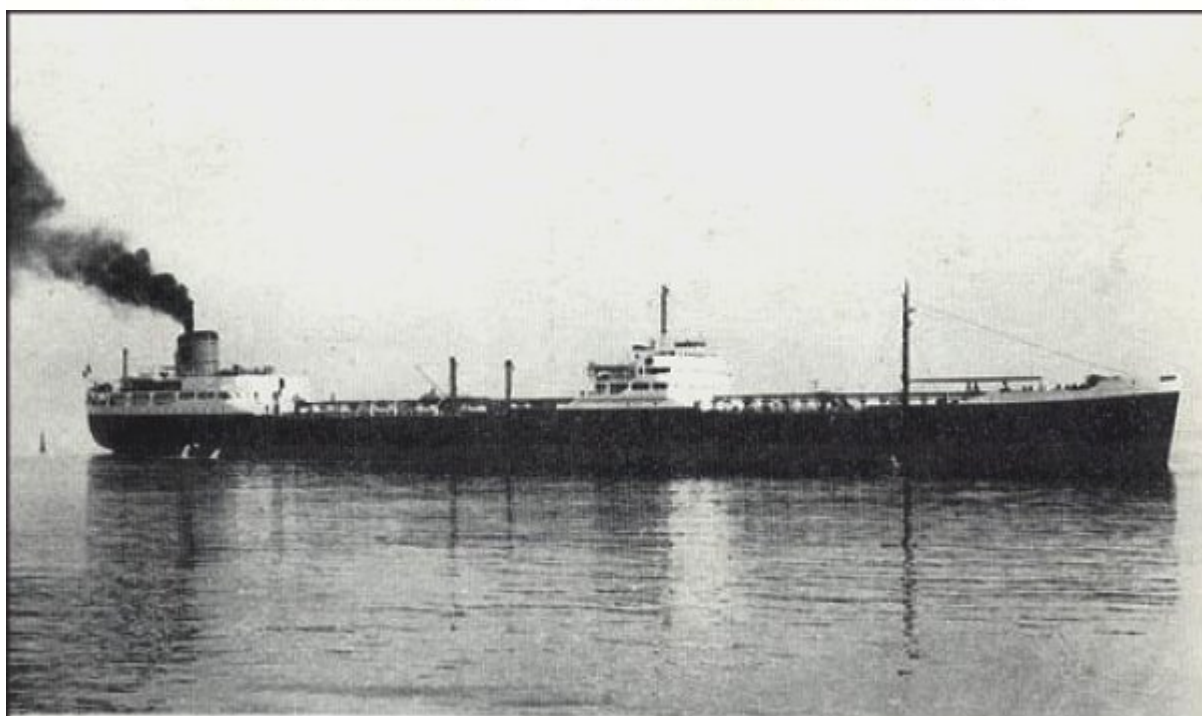
**SOCIETE MARITIME SHELL — S.T.S. ISANDA 31.870 D.W. TONS**



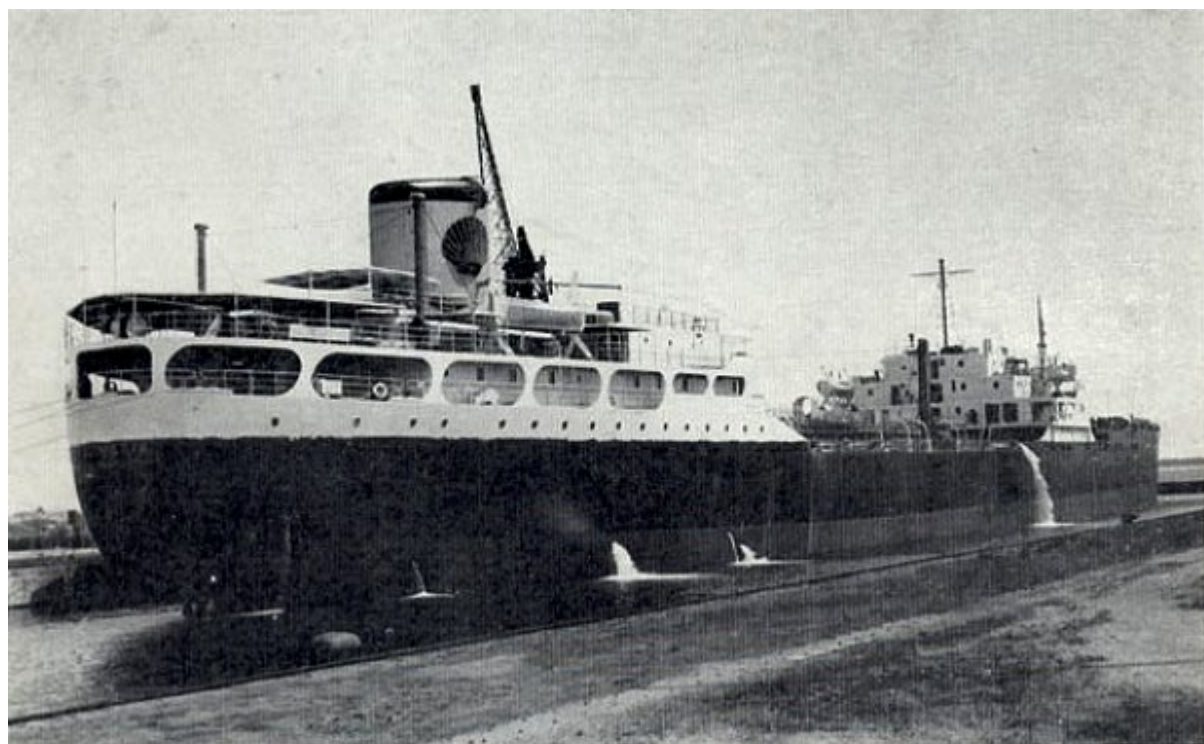
**SOCIETE MARITIME SHELL — S.T.S. ISARA 32.000 D.W. TONS**



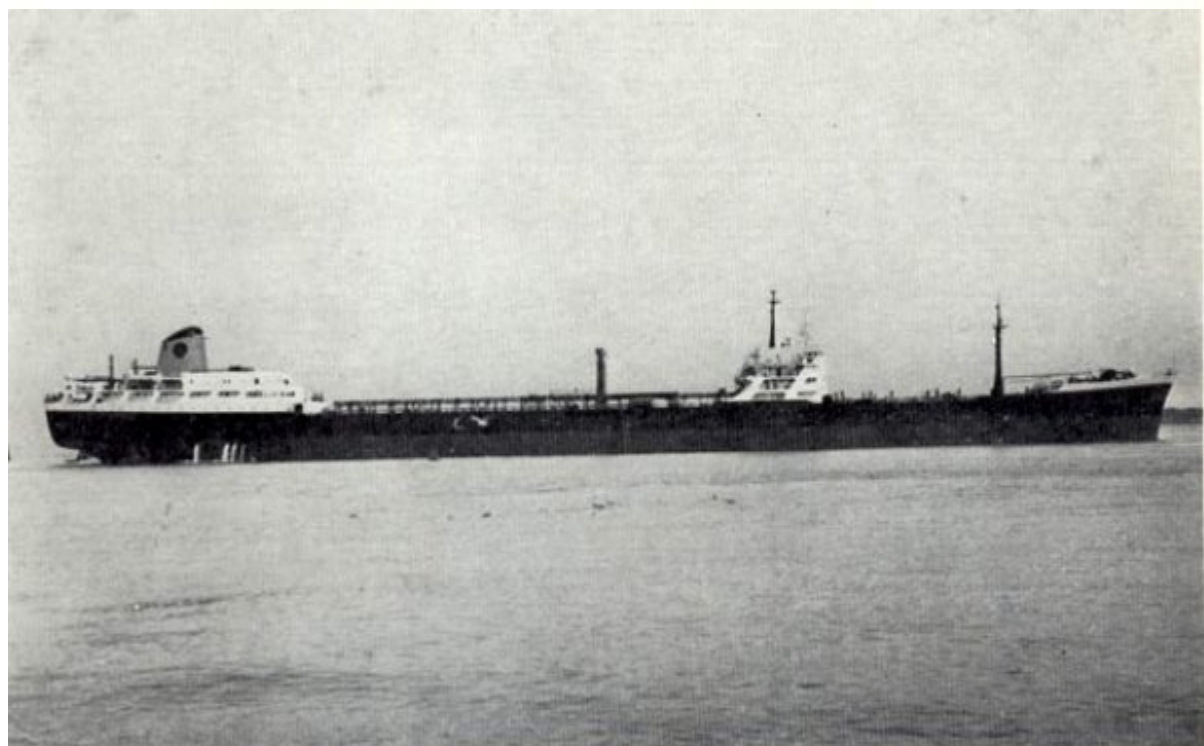
**SOCIETE MARITIME SHELL — S.T.S. ISIDORA 31.964 D.W. TONS**



**SOCIETE MARITIME SHELL — ISOCARDIA 31.984 D.W. TONS**



**SOCIETE MARITIME SHELL — ISOMERIA 32.000 D.W. TONS**



**SOCIETE MARITIME SHELL — S.T.S. ISSELIA 42.300 D.W. TONS**





**L'Isoméria, l'Isanda et l'Isidora après leur "jumboïsation": une seconde vie ...**

